



Cell Applications, Inc. advantage:

- High purity and low passage
- Rigorous quality control
- Cells from a variety of tissues & species
- Matched sets from the same donor
- Maximum flexibility
- Custom services
- Ready-to-use Total Kits

> 130 published studies on:

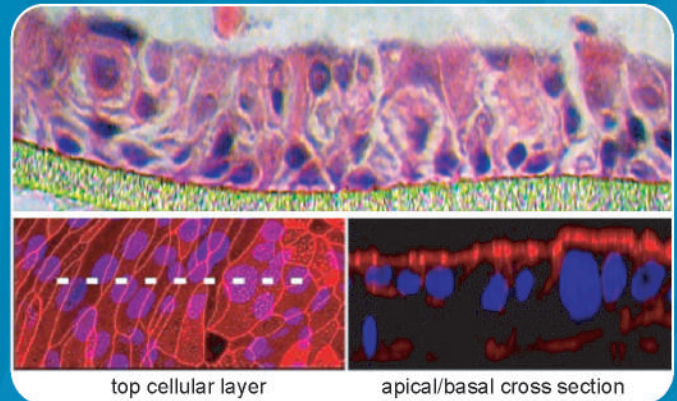
- Epithelial function & disease
- Viral infections & oncogenesis
- Cancer treatment & toxicology
- Pulmonary diseases & smoking
- Cellular senescence & apoptosis
- Stem cell microenvironment
- Tissue repair mechanisms
- Effects of radiation, stress & inflammation
- Primary & immortalized cells comparison

Primary Epithelial Cells

- Bladder Epithelial Cells (H)
- Bronchial Epithelial Cells (H)
- Cervical Epithelial Cells (H)
- Corneal Epithelial Cells (H)
- Endometrial Epithelial Cells (B)
- Epidermal Keratinocytes (H, R)
- Mammary Epithelial Cells (H)
- Placental Epithelial Cells (H)
- Prostate Epithelial Cells (H)
- Renal Proximal Tubule Epithelial Cells (H)
- Tracheal Epithelial Cells (H)
- Urethra Epithelial Cells (H)

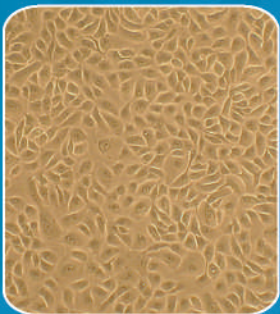
EpC: Epithelial Cells
 H: Human
 B: Bovine, R: Rat

3D Airway model system

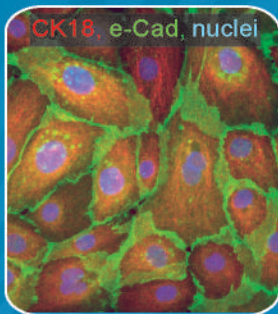


When grown on inserts and provided with the liquid/air interface, Human Bronchial Epithelial Cells (HBEPc) can differentiate into a pseudostratified epithelium and serve as a more physiological 3D tissue model for in vitro studies. Top panel: tissue slice. Bottom panel: confocal micrographs; cells are labeled for actin (red) and nuclei (blue).

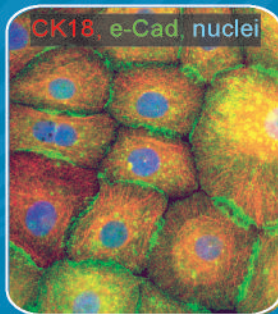
Mammary EpC



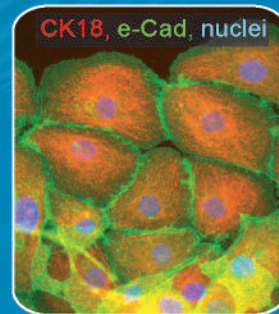
Mammary EpC



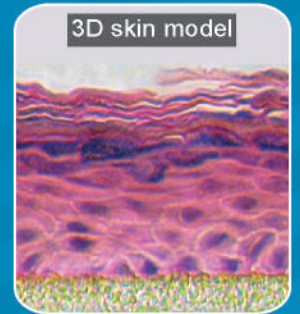
Corneal EpC



Keratinocytes



Keratinocytes



ORDER TODAY!