

## BACKGROUND

CD40 is a member of the TNF-receptor superfamily. This receptor has been found to be essential in mediating a broad variety of immune and inflammatory responses including T cell-dependent immunoglobulin class switching, memory B cell development, and germinal center formation. AT-hook transcription factor AKNA is reported to coordinately regulate the expression of this receptor and its ligand, which may be important for homotypic cell interactions. Adaptor protein TNFR2 interacts with this receptor and serves as a mediator of the signal transduction.<sup>1</sup> The interaction of this receptor and its ligand is found to be necessary for amyloid-beta-induced microglial activation, and thus is thought to be an early event in Alzheimer disease pathogenesis.<sup>2</sup> Two alternatively spliced transcript variants of this gene encoding distinct isoforms have been reported.

### References:

1. Klaus, G.G.B. et al: Int. Rev. Immunol. 15:5-31,1997
2. Togo, T. et al: Brain Res. 885:117-21, 2000

## TECHNICAL INFORMATION

### Source:

CD40 Antibody is a rabbit antibody raised against a short peptide from human CD40 sequence.

### Specificity and Sensitivity:

This antibody detects endogenous levels of CD40 proteins without cross-reactivity with other related proteins.

**Storage Buffer:** PBS and 30% glycerol

### Storage:

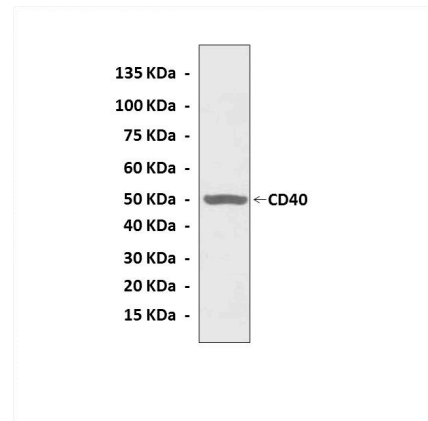
Store at -20°C for at least one year. Store at 4°C for frequent use. Avoid repeated freeze-thaw cycles.

## APPLICATIONS

| Application: | *Dilution: |
|--------------|------------|
| WB           | 1:1000     |
| IP           | n/d        |
| IHC          | n/d        |
| ICC          | n/d        |
| FACS         | n/d        |

*\*Optimal dilutions must be determined by end user.*

## QUALITY CONTROL DATA



Western Blot detection of CD40 proteins in HeLa cell lysate using CD40 Antibody.

