

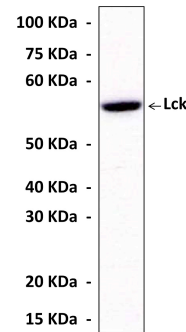
BACKGROUND

Lck (lymphocyte cellular kinase) is a member of the Src family of protein tyrosine kinases, and plays a key role in T-lymphocyte activation and differentiation. Lck is associated with a variety of cell surface receptors and is critical for T-cell antigen receptor (TCR) signal transduction.¹ In many non-lymphoid cells, Lck plays an important role in mediating the signaling from cell surface receptor tyrosine kinases to downstream components, e.g. Lck is required for c-Kit-stimulated MAK kinase activation in lung cancer cells.² In some cancer cells, p56lck could favor metastases by facilitating loss of cell adhesion.³ Under certain conditions Lck is also involved in the induction of apoptosis.⁴ In addition, Lck is targeted by regulatory proteins of T-lymphotropic viruses, such as the Herpesvirus saimiri (HVS) tyrosine kinase interacting protein (Tip). This oncoprotein physically interacts with Lck in HVS-transformed T cells and impacts its catalytic activity.⁵ Understanding the regulation of Lck activity may serve as a basis for new drug development capable of modifying Lck activity in different pathological situations.

References:

1. Palacios, E.H. & Weiss, A. : Oncogene 23:7990, 2004.
2. Bondzi, G. et al. : Cell Growth Differ. 11:305, 2000.
3. Rouer, E. : Bull. Cancer 91:928, 2004.
4. Samraj, A.K. et al. : Oncogene 25:186, 2006.
5. Isakov, N. & Biesinger, B. : Eur. J. Biochem. 267:3413, 2000.

QUALITY CONTROL DATA



Specific detection of Lck proteins from Jurkat cell lysate in Western blot analysis using Lck Monoclonal Antibody (19D8).

TECHNICAL INFORMATION

Source: Anti-Lck is a mouse monoclonal antibody raised against Sf9-expressed recombinant human Lck protein.

Specificity and Sensitivity: Anti-Lck antibody specifically detects endogenous levels of Lck proteins, and recognizes human, mouse, & rat Lck. Anti-Lck does not cross-react with other Src-family members.

Storage Buffer: 0.1 M PBS (pH 7.2), 0.1% glycine, 0.1% NaN₃, 0.1% BSA, 50% glycerol.

Storage: Store at -20°C for at least one year. Store at 4°C for frequent use. Avoid repeated freeze-thaw cycles.

APPLICATIONS

Application:	*Dilution:
WB	1:1000
IP	n/d
IHC	n/d
ICC	n/d
FACS	n/d

*Optimal dilutions must be determined by end user.

